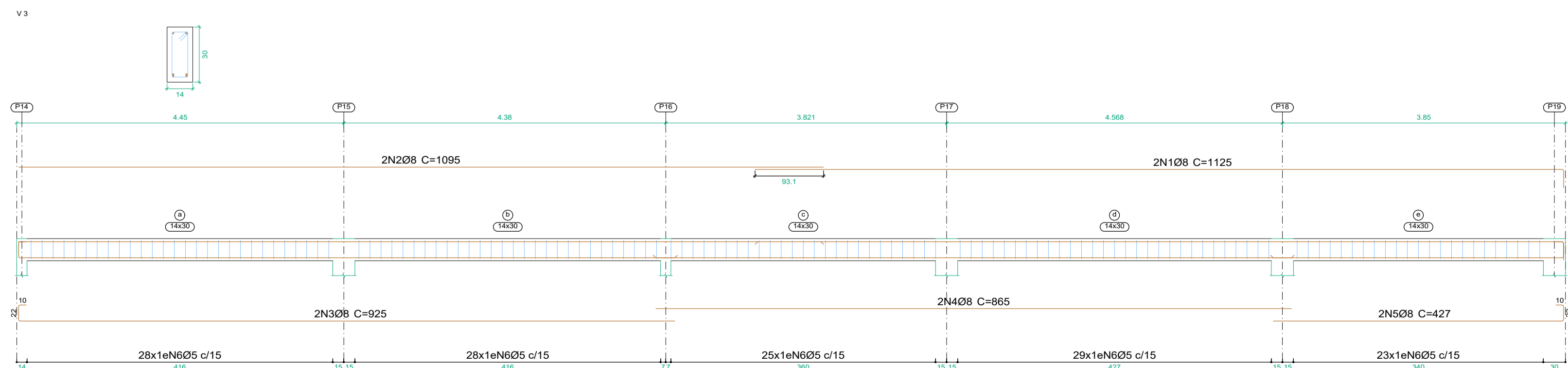
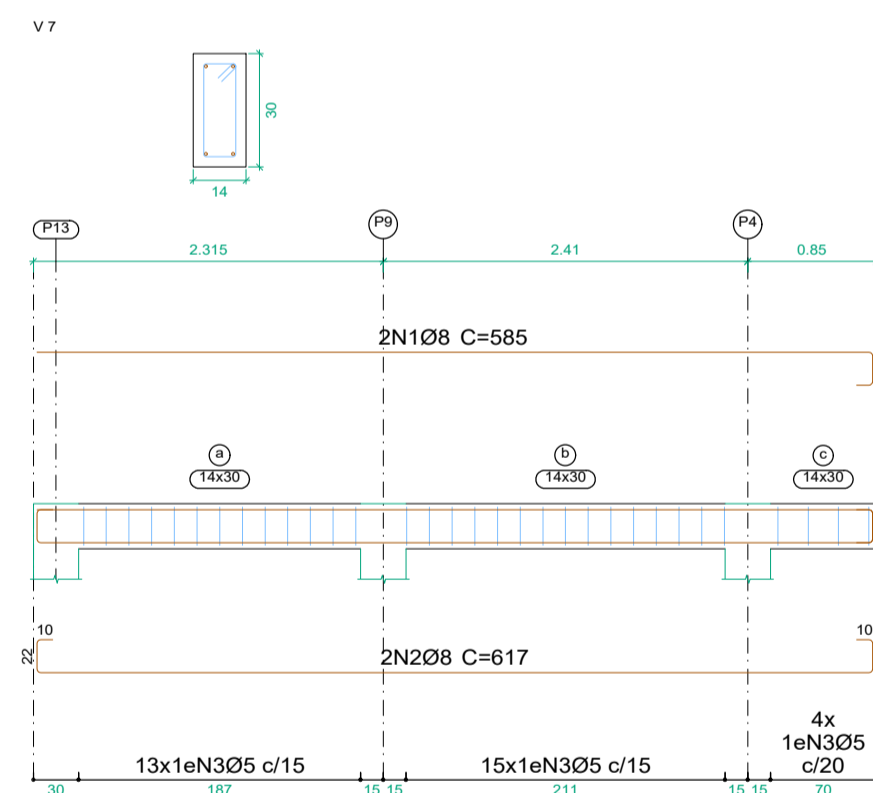
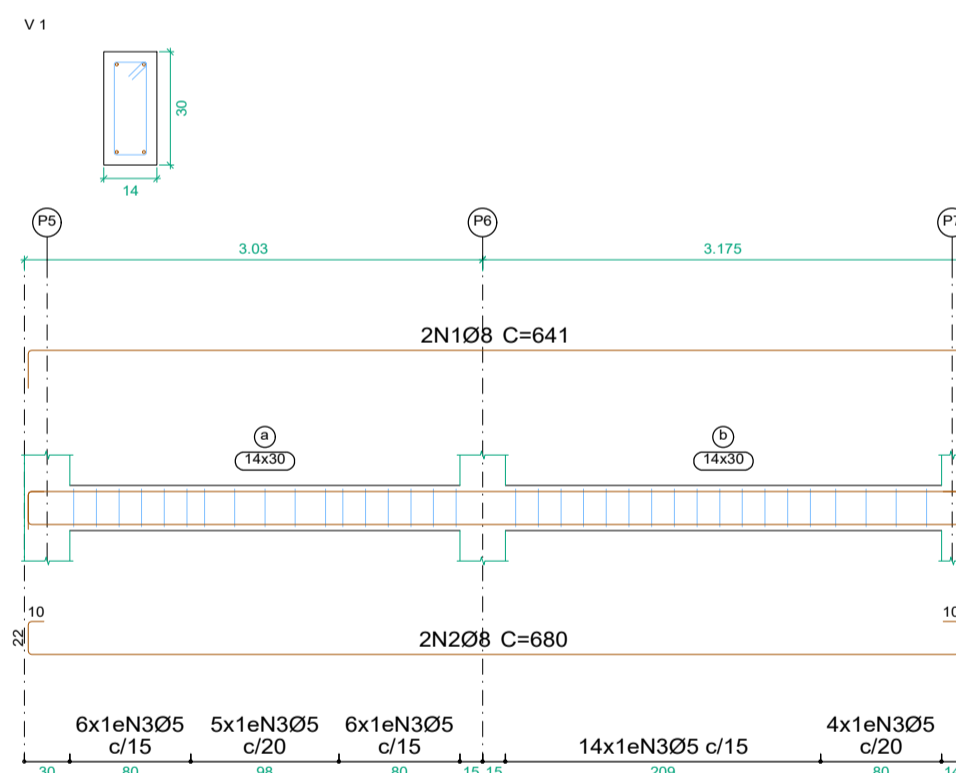
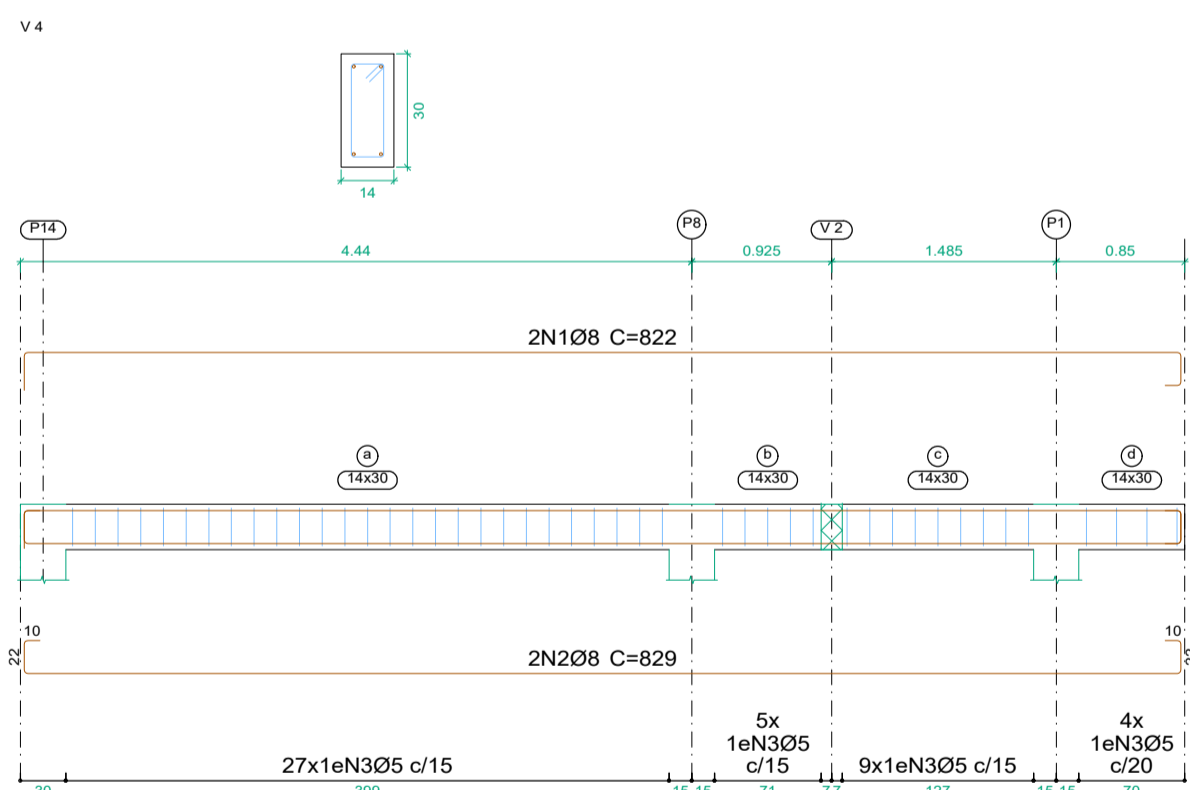
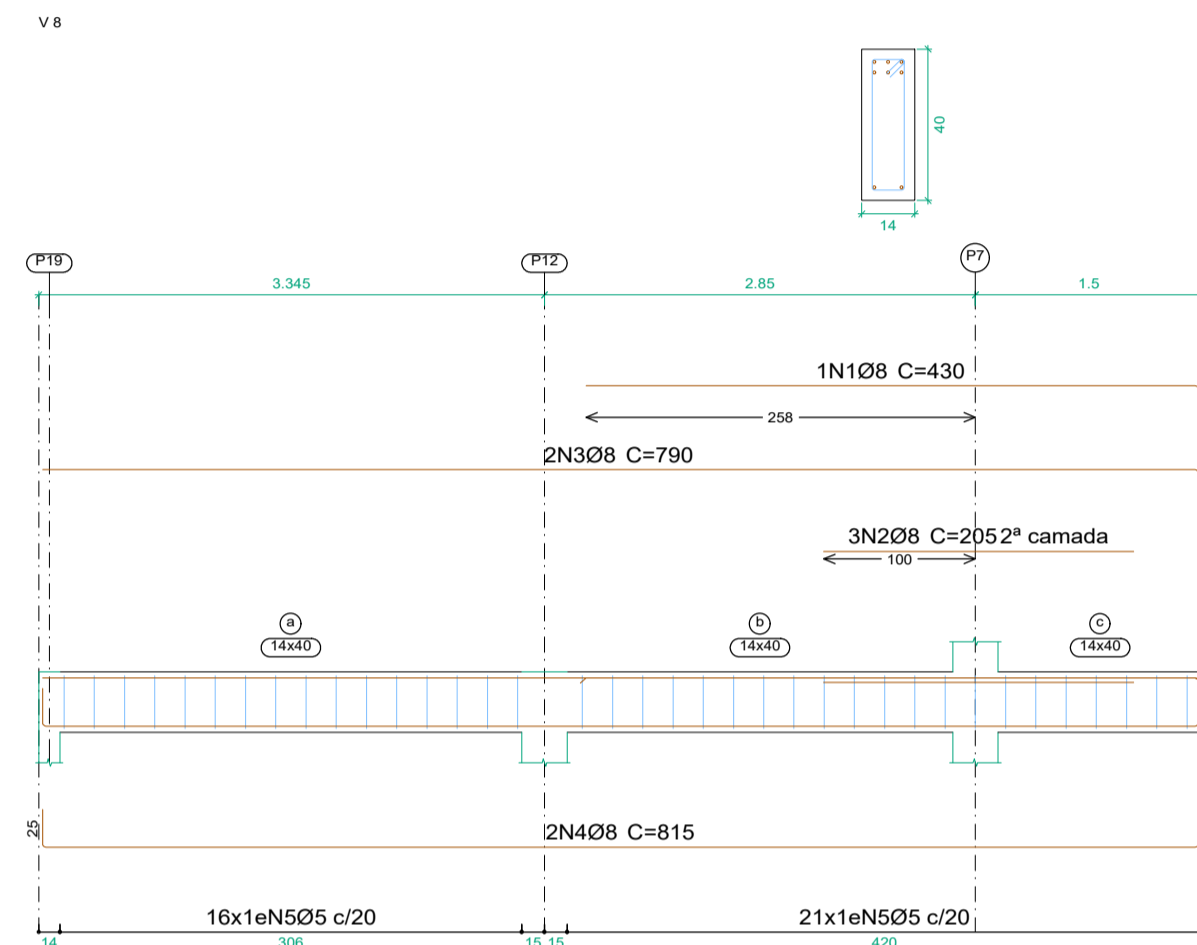


Technical drawing of a reinforced concrete slab cross-section. The drawing shows a slab with a total width of 14 units and a height of 25 units. The slab is supported by two columns, labeled V4 and V5. The distance between the columns is 4.45 units. The slab is reinforced with 2N10Ø8 bars at the top and 2N20Ø8 bars at the bottom. The top reinforcement is spaced at 885 units, and the bottom reinforcement is spaced at 949 units. The slab is also reinforced with 29x1eN305 c/15 bars. A detail view of the slab corner is shown in the top left corner.



Resumo Aço	Comp. total	Peso+10%	
Desenho de vigas	(m)	(kg)	Total
CA-50 Ø8	316.5	137	137
CA-60 Ø5	336.5	58	58
Total			195

Kaique Gabriel Silva Ferreira
Engenheiro Civil
CREA-BA: 051796934-3